

NEWS SPOTLIGHT:

SmartCEMS with Data eElements on Page 2!



IN THIS ISSUE:

President's Message	1
Employee Spotlight!	2
Featured Product	2
New EPA Regulations	3
Representative Spotlight!	4
eUniversity	4

WELCOME to the CMC Solutions Newsletter!

During these challenging times, we at CMC Solutions remain deeply committed to the welfare of all we serve. Doing the right thing for our clients is at the heart of what we do. Support for all of our PEMS in the field will be maintained. This is a privilege that we step up to every day, whatever conditions we face. It is with that in mind that I am reaching out with an update on the steps we are taking to ensure you can access the support you need when you need it. SmartCEMS with Data eElements continues to perform in the field since its release last year and has provided near 100% uptime for most sites in Q1, 2020.

We have restructured our support team recently to better serve our existing and new customer base. In our main office we have setup a support console with real time status display and access to every site for our key customer support team. Each of us can access the support console remotely, so there will be no interruption of service. We are always available via email with any questions that you may have about PEMS or our company, and customers can access the Helpdesk at www.cmcpems.com to submit support requests online.

We realize that emission monitoring remains an important asset for our clients. While we may not physically be in the office during this pandemic, we are still available to answer your questions and offer you support. We are committed to being there for you, and we thank you for your kind consideration during these difficult times.



Brian Swanson - President, CMC Solutions



EMPLOYEE SPOTLIGHT

Kristen Ailsworth

Kristen Ailsworth is one of CMC's project engineers. She joined the CMC team in 2019 after she graduated from the University of Michigan with a Bachelor's degree in Environmental Engineering. Kristen has worked on several major projects, and has been instrumental in supporting the design and engineering of new PEMS projects both in the US and overseas. Welcome Kristen to our team!



Kristen Ailsworth
Project Engineer

PRODUCT FEATURE: DATA ELEMENTS

CMC Solutions released SmartCEMS with Data elements last year and it continues to be our most popular application sold to date. SmartCEMS provides the statistical hybrid PEMS engine that is flexible and adaptable along with the monitoring and reporting features for both 40 CFR Part 60 and Part 75 compliance.

It provides access to all of the predicted, collected, and aggregated data that the system has been configured to produce. It uses a simple and intuitive interface for editing data and reporting data from the SmartCEMS PEMS. The reporter will generate all of the required regulatory reports and allow for custom report generation.

To learn more about SmartCEMS with Data elements, visit our website where you can see the full [cutsheet](#) and more information about our full range of products and services!

Domestic Sales Representatives:

Charles Thatcher

Louisiana
Gulf Coast Thermal
985-892-4224
cht@bellsouth.net

Allen Woodbury

Utah
North Associates
801-274-3333
Northassociates
@yahoo.com

George Conostas

California
CTI ControlTech
925-208-4250
gc@CTI-CT.com

Joanne Haag

Ohio
HP Thompson
513-831-8044
hpthompson@aol.com

Dan Rice

Pennsylvania
Rice Associates
412-487-5530
Riceassociates
@earthlink.net

Amer Khaqan

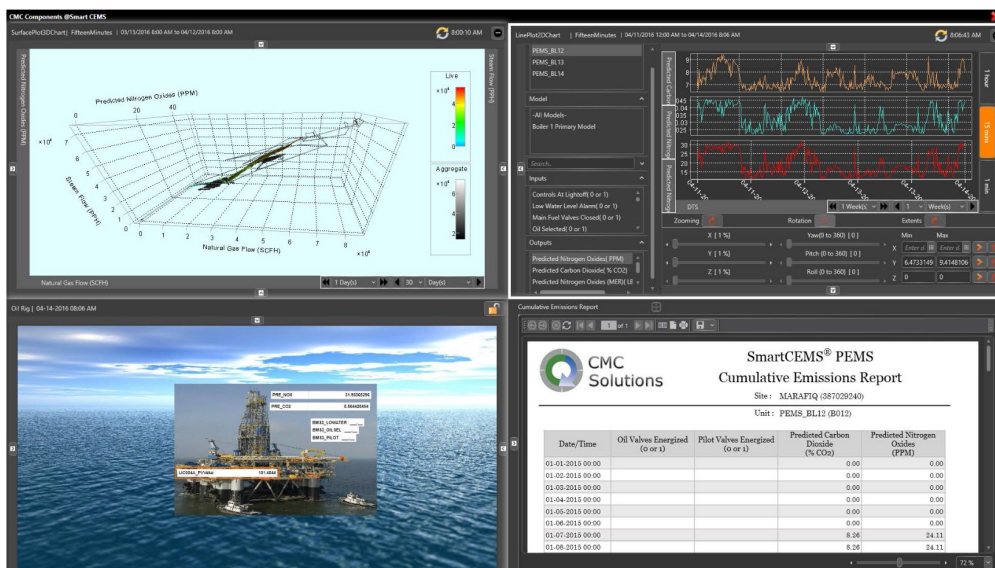
Virginia
Technology Edge
703-652-1845
akhaqan@
technologyedge.biz

Mike Dicen

Alabama
Wilcox Environmental
Engineering
205-699-3236
mdicen@wilcoxenv.com

Paul Lawrence

Canada
PML Process Technology
905-206-9514
sales@pmlprocess.com



**International Sales
Representatives:**

Sergio Ferreira

Brazil - ENGEZER

55-21-2128-5319

Sergio.ferreira@engezer.com

Luciano Montoya

Chile - ESINFA

56-6140-2795

Luciano.montoya@esinfa.cl

Chirag Maniar

India - Chemtrols

(+91-22) 67151 374

Chirag.maniar@chemtrols.com

Jinho Kim

Korea -

Haedong Development, CO

+82 (0)2 542-6309

jhkim@haedong.hd.co.kr

Moaz Razuqi

Kuwait - BP Consulting (BPC)

965-222-87121 ext 5700

info@bpckuwait.com

Izhan Zani Mohamad Reduan

Malaysia - ASMA

603-7845-4566

zani@enviromalaysia.com.my

Reynaldo S. Tejada

Philippines -

PEMS Technologies Inc.

+63 2 724-5665/67

adajetyer@yahoo.com

Thads Abalos

Philippines -

Tadchem Marketing

+63 (02) 533-3112

pems1129@yahoo.com

Mohammad Tauheed

Qatar - GloTech

55-21-2128-5319

glotechqatar@gmail.com

Mohd Adnan Khan

Saudi Arabia -

Environmental Sources

Trading Est.

+966 598330894

adnan@est-ksa.com

SOME FACILITIES TARGETED TO BE REMOVED FROM US EPA PART 75 PROGRAM

The Environmental Protection Agency (EPA) finalized a regulatory action entitled "Emissions Monitoring Provisions in State Implementation Plans Required Under the NOX SIP Call." This amends the NOX SIP Call regulations to allow states to establish alternative, lower-cost monitoring options including the use of PEMS (Predictive Emissions Monitoring System) technology. This rule was deregulatory in nature and will certainly lead to lower monitoring costs for States that choose to revise their State Implementation Plans (SIPs). Many States are moving forward with proposed revisions to SIP plans now.

EPA Fact Sheet: https://www.epa.gov/sites/production/files/2019-02/documents/nox_sip_call_update_factsheet.pdf

This means that some facilities will no longer be regulated under EPA Part 75, instead, they will be regulated under Part 60 where established performance standards are in place and prior administrative approval is not required. This is good news since Part 60 regulations do not require US EPA approval prior to implementing PEMS for compliance emission monitoring purposes. As a result, emissions monitoring for these affected sources will be quicker to certify and less expensive to operate and maintain.

CMC Solutions can help you take advantage of this new ruling! We will work with you to evaluate your current emissions monitoring situation and potentially save you money with a PEMS installation. PEMS tends to be less expensive in the initial capital costs and minimizes ongoing maintenance cost once implemented. If you're not sure if your facility is on the EPA list then we would be happy to look it up for you. If you are interested in replacing your CEMS with CMC PEMS then give us a call or send an email to sales@cmcsolutions.org and let us show you the features of SmartCEMS with Data elements and how we can reduce your emissions monitoring budget!



REPRESENTATIVE SPOTLIGHT

Gulf Coast Thermal

Charles Thatcher
Louisiana
Gulf Coast Thermal
985-892-4224
cht@bellsouth.net

International Sales Representatives:

Sayad Ashgar
Saudi Arabia
Labomatic
966(0)3-8337945
labomatic@zajil.net

Tariq Qahtani
Saudi Arabia
SELEQT Trading East
+966 548 000 890
taq1@seleqt.com.sa

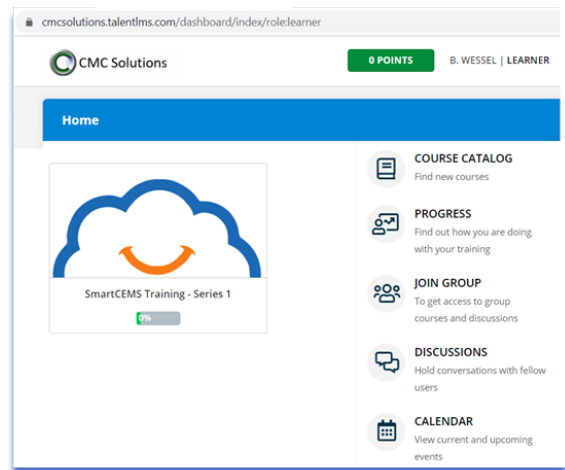
Nuhad Ammar
United Arab Emirates
Matrix
+971 (2) 634-3969
matrixtr@matrixuae.ae

THE NEW CMC eUNIVERSITY

You asked for it and we listened! CMC Solutions has created an online eUniversity for training on our software products. Our most popular software product is SmartCEMS with Data eElements, and we will have 3 classes online to introduce you to the unique statistical hybrid PEMS approach. Come test drive our software and get up to speed on the development of powerful emission and process modeling tools offered by CMC.

The CMC Solutions eUniversity will be an online service so you don't have a download or install anything. Just contact us at sales@cmcsolutions.org to get your login credentials (user ID and password) then go to <https://cmcsolutions.talentlms.com> and choose what class you want to take. Classes demonstrate your progress building a skillset and you can earn a certificate once you have developed the skillset.

We'll be adding new courses throughout the year so check back regularly to see the full class list!



A leading provider of PEMS

CMC SOLUTIONS, LLC
23550 Haggerty Road
Farmington Hills MI, 48335
Phone: (248) 960-1632
sales@cmcsolutions.org